

## Ship Fact Sheet

# AMAMORA



AMAMORA

AmaWaterways' twin balcony ships represent some of the newest vessels in our fleet. Heated pools with a swim-up bar provide a tranquil environment for viewing stunning mountains and spired skylines. Plus, spacious staterooms afford guests comfort and privacy to rejuvenate while still experiencing the magnificent scenery.



The Chef's Table, AMAMORA

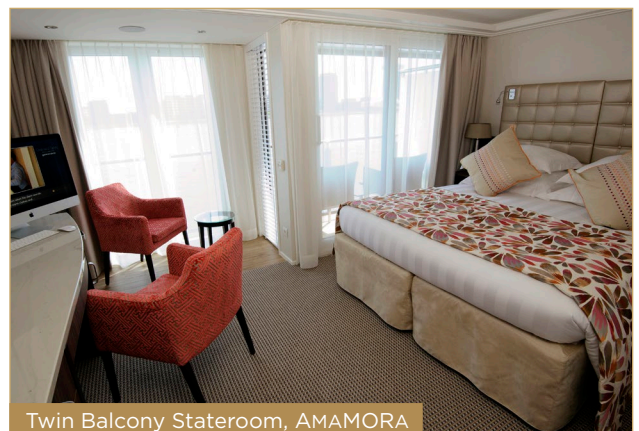
### Included Features:

- ◆ Panoramic Lounge with bar, piano and dance floor
- ◆ Walking track, pool with swim-up bar, fitness room and bicycles for in-port exploration
- ◆ Complimentary Wi-Fi
- ◆ Hair salon and massage services\*
- ◆ The Chef's Table specialty restaurant with tasting menu
- ◆ Breakfast and lunch buffets featuring regional cuisine; multi-course dinners made with fresh local ingredients
- ◆ Hand-selected wine, beer and soft drinks with meals—plus a Sip & Sail cocktail hour
- ◆ All-day tapas menu and afternoon tea; 24-hour coffee station
- ◆ Welcome Cocktail, Welcome Dinner, La Chaîne des Rôtisseurs Dinner, Captain's Cocktail and Gala Dinner

\*Additional costs apply.

### Stateroom Accommodations:

- ◆ All outside accommodations, most with revolutionary twin balconies
- ◆ Marble bathrooms, multi-jet showers, soothing bath products, cotton bathrobes, slippers and hair dryer
- ◆ Spacious suites (350 sq. ft.) with substantial sitting area, mini fridge, bathtub, separate shower, double sinks, and beds facing the river
- ◆ Generous closet and storage space with in-room safe
- ◆ Entertainment-On-Demand with high-speed Internet, movies, music and English-language TV
- ◆ Individually controlled air-conditioning
- ◆ Bottled water replenished daily
- ◆ Connecting staterooms and triple and quad occupancy available in select staterooms

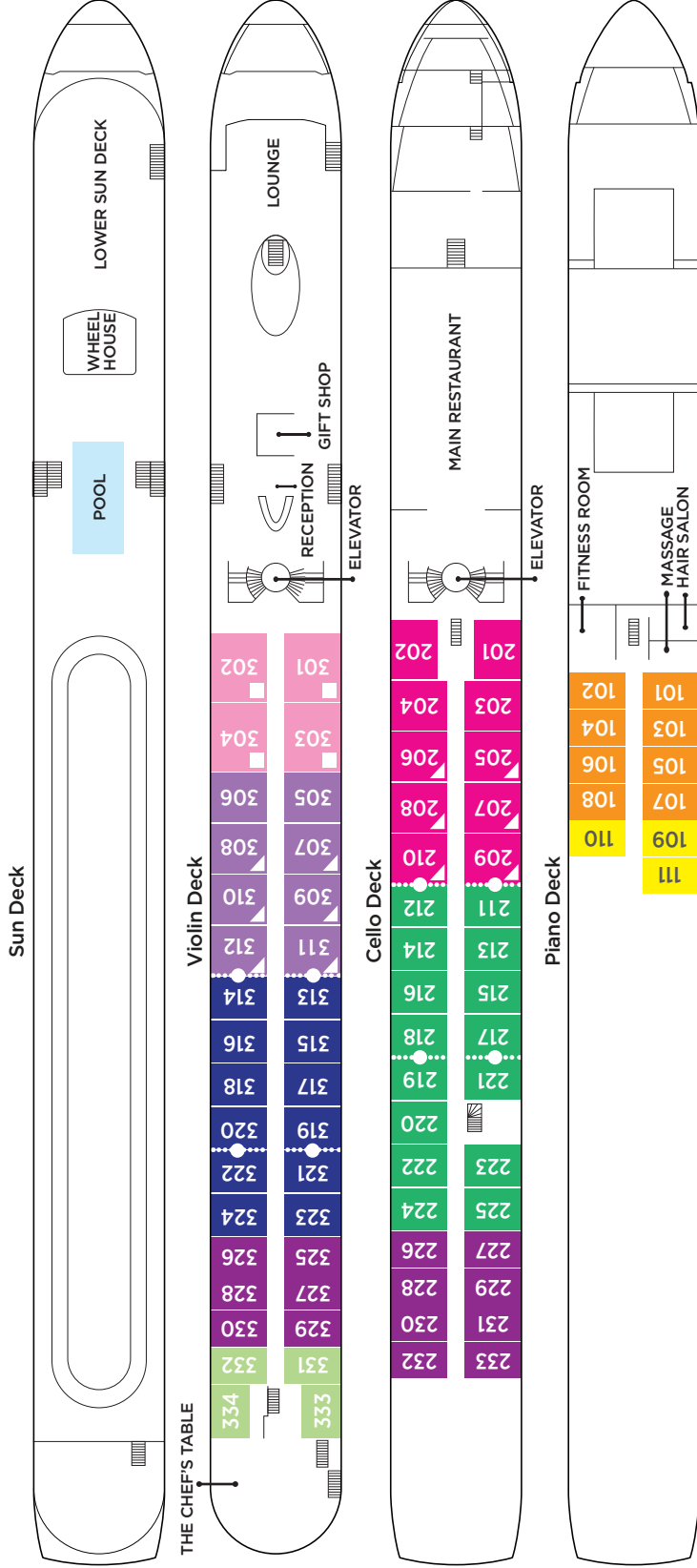


Twin Balcony Stateroom, AMAMORA

# AMAMORA

## Technical Data

Year Built: AmaMora 2019  
 Length: 443 ft.  
 Width: 38 ft.  
 Crew: 51  
 Staterooms: 78  
 Passengers: 156  
 Registry: Switzerland



Elevator on AmaMora reaches Main Restaurant, Lobby/Main Lounge and staterooms on Violin, Cello and Piano Deck.

Suite	Violin Deck/French & Outside Balcony - 350 sq. ft.	Category D / E		Twin Windows
Cat. AA	Violin Deck/French & Outside Balcony - 235 sq. ft.	Category CB		French Balcony
Cat. AB	Cello Deck/French & Outside Balcony - 235 sq. ft.	Category CA		French Balcony
Cat. BA	Violin Deck/French & Outside Balcony - 210 sq. ft.	Category BA / BB		French Balcony Outside Balcony Large Window
Cat. BB	Cello Deck/French & Outside Balcony - 210 sq. ft.	Category AA / AB		French Balcony Outside Balcony Large Window
Cat. CA	Violin & Cello Deck/French Balcony - 170 sq. ft.	Category Suite		French Balcony Outside Balcony Large Window
Cat. CB	Violin Deck/French Balcony - 155 sq. ft.			
Cat. D	Piano Deck/Fixed Windows - 160 sq. ft.			
Cat. E	Piano Deck/Fixed Windows - 160 sq. ft.			

••••• Staterooms can become connecting by request.  
 ▲ Up to triple occupancy  
 ■ Up to quadruple occupancy

Note: Stateroom layouts are not to scale.  
 Staterooms 201 & 202 are slightly modified

